

Selenter See

Selenter See

Baierdorf

Bocksbarg


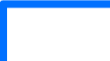



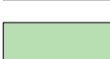

Trideburg

Hüttenholz

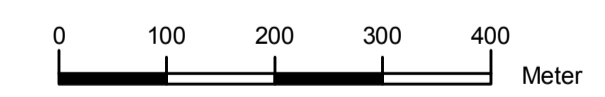
Am Bahndamm

Am Bahndamm

Legende

-  FFH-Gebiet "Gottesgabe"
-  EGV-Gebiet "Selenter See-Gebiet"
- Übergangsbiotop**
-  9130 Waldmeister-Buchenwald
- Lebensraumtypen***
-  3150 eutropher See
-  7140 Übergangsmoor
-  9110 bodensaurer Buchenwald
-  9130 Waldmeister-Buchenwald

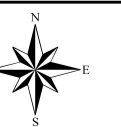
* Quelle: EFTAS 2011



Managementplan

FFH 1728-307 "Gottesgabe"
EGV 1628-491 "Selenter See-Gebiet"

Karte 2b - Lebensraumtypen -



SH  Schleswig-Holstein
Ministerium für Energie, Landwirtschaft, Umwelt und ländliche Räume

Maßstab: 1 : 7.000
Stand: 07.06.2017
Bearbeitung:
Projektgruppe
NATURA 2000

Kartengrundlage: © GeoBasis-DE / LVermGeo-SH

fachlich: 506 u. 524

kartogr./GIS: LLUR551